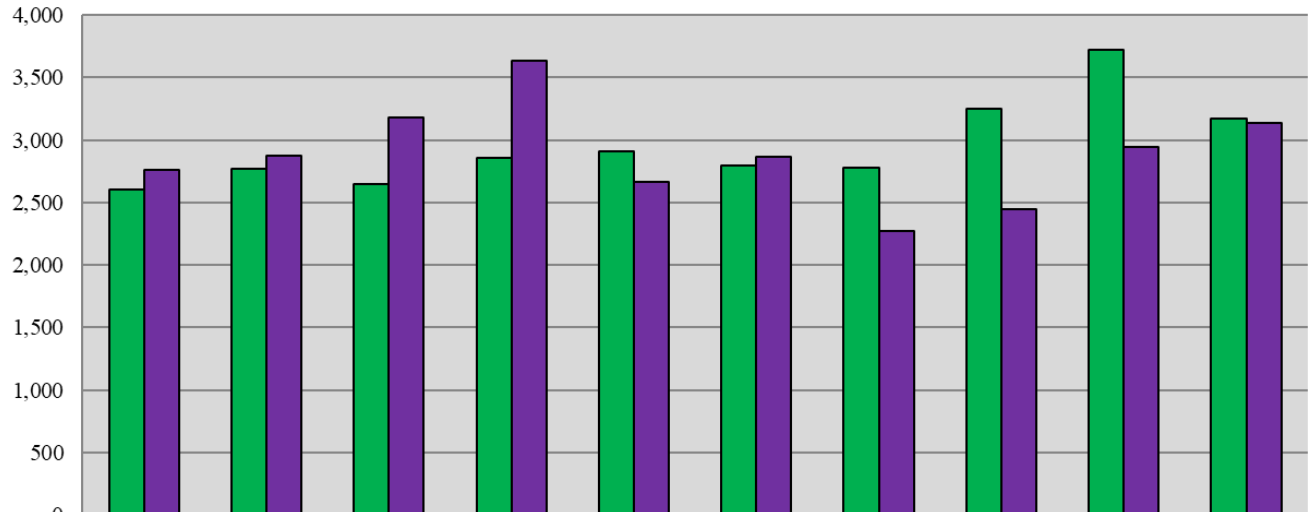


## Court of Chancery 10-Year Estates Caseload Trend



	2014	2015	2016	2017	2018	2019	2020	2021	2022	2023
Filings	2,605	2,769	2,649	2,859	2,913	2,792	2,774	3,250	3,717	3,170
Dispositions	2,765	2,870	3,180	3,633	2,663	2,868	2,275	2,451	2,940	3,134

**Fiscal Year**